



Isuzu MUX 2021+ on Scout Roof Rack FITTING INSTRUCTION

IMPORTANT! – READ BEFORE INSTALLATION

- This product must be installed exactly as per these instructions using only hardware supplied.
- Take a few moments to read instructions thoroughly before beginning work.
- In the event of damage to any bar component please contact OFFROAD ANIMAL to arrange repair/replacement of components.
- Do not use this product for any vehicle make or model other than that specified on these instructions.
- Do not remove labels from this product.
- This product and its fixings must not be modified in any way unless stated in these fitting instructions.
- The installation of this product is recommended for trained personnel.
- These instructions are correct at time of publication. OFFROAD ANIMAL cannot be held responsible for the impact of any changes subsequently made by the vehicle manufacturer. If you find something has changed, please contact us to let us know!
- During installation it is the duty of the installer to check correct operation/clearances of all components.
- If Instructions are to be printed for reference in the workshop, it is recommended that they are printed in colour, for best legibility.

GENERAL CARE AND MAINTENANCE

Only wash the product with a PH neutral car wash to prevent paint damage and discolouration.

Plastic parts may be maintained with silicone spray.

Do not use acidic or alkaline based cleaning products.

It is important to perform regular checks (pre trip or on an annual basis) on the installed product. Checks include:

- Visual inspection for damage (eg. cracks, chips, dents etc.)
- Electrical wiring is not rubbing anything or worn out
- Bolts are torqued to correct specification (see torque guide below)

For touching up small stone chips, Offroad Animal recommends the following paint products:

- Dupli-Color Trim & Bumper Paint Black (TB101)
- VHT Hood, Bumper & Trim Paint Black (SP27)

BOLT TORQUE SETTINGS

Use the following bolt torques on all general fasteners, unless otherwise specified.

GENERAL FASTENERS	
Size	Torque Nm
M5	5 Nm
M6	9 Nm
M8	22 Nm
M10	44 Nm
M12	77 Nm

Use the following bolt torques on all structural front bar mount and tow point fasteners, and rear towbar fasteners, unless otherwise specified.

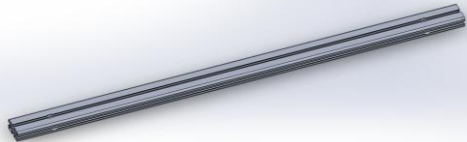
FRONT BAR MOUNTS AND TOW POINTS + REAR TOWBAR	
Size	Torque Nm
M10	57 Nm
M12	100 Nm
M14	164 Nm
M16	248 Nm

Always use a torque wrench to set correct torque settings. Ensure torque wrench is set to Nm unit of measurement. Otherwise perform conversion to lb-ft.

PARTS LISTING

IMPORTANT: Check all parts are present before beginning work! Contact OFFROAD ANIMAL if something is missing.

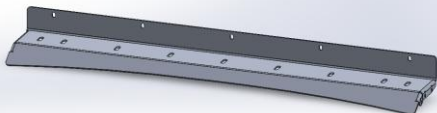
Main Parts – Cross Rail Kit

Qty	Part Number	Description	Image
7	E-0005 - 1150	Scout Roof Rack – Cross Bar Extrusion 1150MM	

Main Parts – Main Fitting Kit

Qty	Part Number	Description	Image
1	B-0648L	MUX 21+ Scout Roof Rack Side Rail	
1	B-0648R	MUX 21+ Scout Roof Rack Side Rail	
1	B-0541	DMAX 21+ Scout Roof Rack Standard Wind Deflector	
2	B-0702	DMAX Scout Rack - Front Mounting Block	
4	B-0650	Isuzu MUX 2021+ Scout Rack Fabricated Mount	
2	B-0703	ISUZU MUX Scout Rack - Folded Rear Mount	

Optional Light Bar Kit – Purchased Separately

Qty	Part Number	Description	Image
1	B-0542	DMAX 21+ Scout Roof Rack Light Bar Wind Deflector	



Small Parts – Contained in Small Parts Kit Bag

QTY.	PART NO.	DESCRIPTION
49	M8 HD FLAT WASHER - BZP	M8 FLAT WASHER - High Tensile 19x8x2mm, ISO4042 ZnNi BLACK PASSIVATED FINISH
21	M8 X 16 BHCS BZP	SCREW, BUTTON HEAD CAP, M8X16X1.25 GR12.9, ISO4042 ZnNi BLACK PASSIVATED FINISH
21	M8 NUT	Hex Nut, M8x1.25 G8.8 ZP
28	M8 X 20 BHCS BLACK ZINC	SCREW, BUTTON HEAD CAP, M8X20X1.25, ISO4042 ZnNi BLACK PASSIVATED FINISH
8	M8 Cage nut	NUT, CAGE, M8X1.25 ZINC PLATE
19	M8 HD FLAT WASHER	M8 FLAT WASHER - High Tensile 19x8x1.9mm
20	M8 X 20 HEX	Bolt Hex, M8X20x1.25, GR8.8 ZP
6	M6 FLANGE NUT	Flange Nut, M6x1 G8.8 ZP
6	M6 FLAT WASHER BLACK ZINC	M6 Flat Washer, 12x6.1x1, ISO4042 ZnNi BLACK PASSIVATED FINISH
6	M6x16 BHCS BLACK ZINC	SCREW, BUTTON HEAD CAP, M6X16X1 GR12.9, ISO4042 ZnNi BLACK PASSIVATED FINISH
2	OFA-LOGO	OFFROAD ANIMAL METAL LOGO




TOOLS REQUIRED

The following tools will be required to install the product.

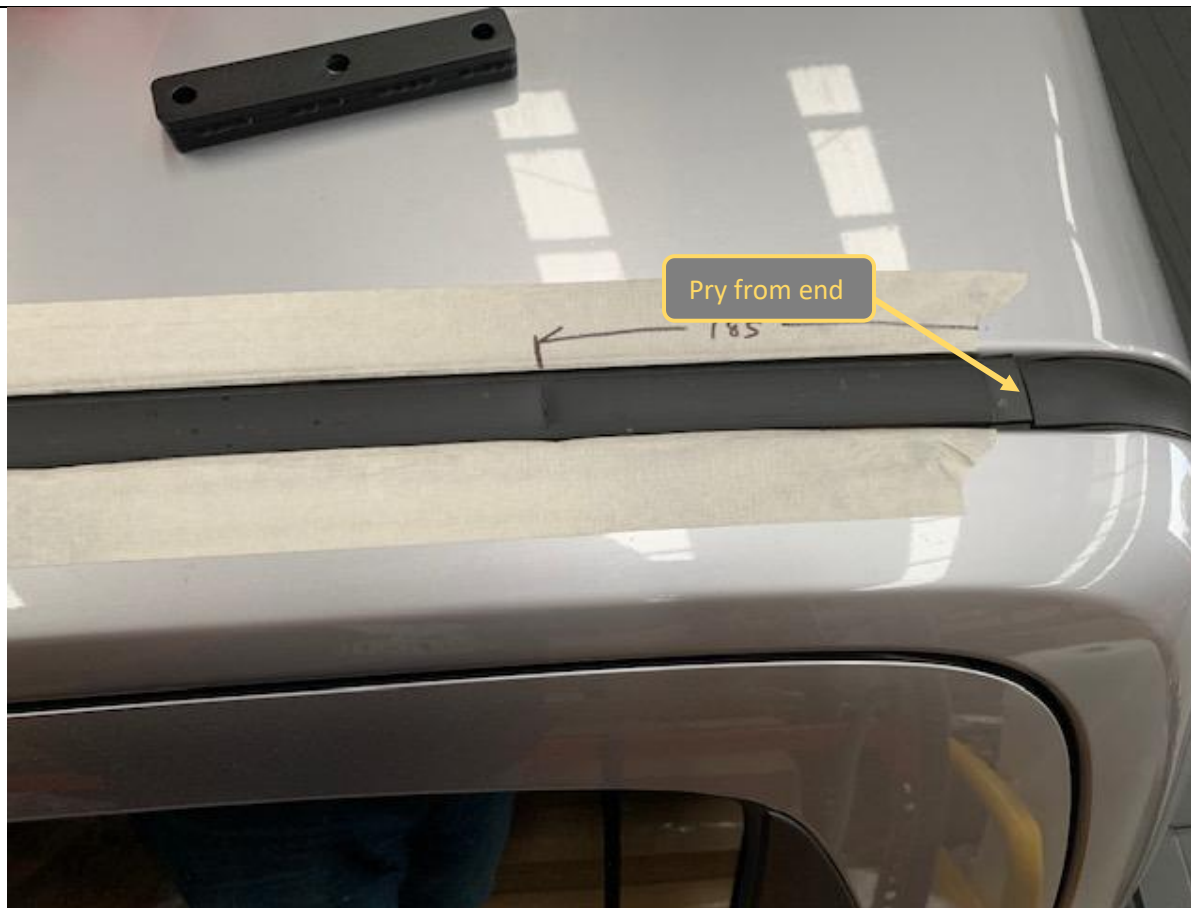
Hand Tools	Power Tools	Workshop Supplies
Metric Socket Set 8-19mm 13mm ¼" Socket Socket Extension Bar Metric Spanner Set 10-19mm Hex (Allen) Key Set 4-6mm Tape Measure Trim Tool		Soft Blanket Automotive grade Silicone Sealant Permanent Marker Masking Tape

WORKSHOP SAFETY

It is the responsibility of the installer to always complete works in a safe manner. Make sure the following safety equipment is available and precautions are observed whilst fitting this product.

<p>Hearing Protection</p> 	<p>Always wear ear protection when using power tools.</p>
<p>Eye Protection</p> 	<p>Ensure eye protection is always worn when cutting or drilling.</p>
<p>Manual Handling</p> 	<p>Do not attempt to lift bar assemblies or rock sliders on your own.</p> <p>Always use two people to lift or use mechanical Lifting aid such as hydraulic lifting trolley.</p>
<p>Vehicle Support</p> 	<p>Always ensure vehicle is properly supported when working on it. Do not attempt to fit products whilst suspension work is being carried out. Do not work under a vehicle supported only by a jack.</p>

MODELS WITHOUT ROOF RAILS. IF ROOF RAILS FITTED SKIP TO STEP 8

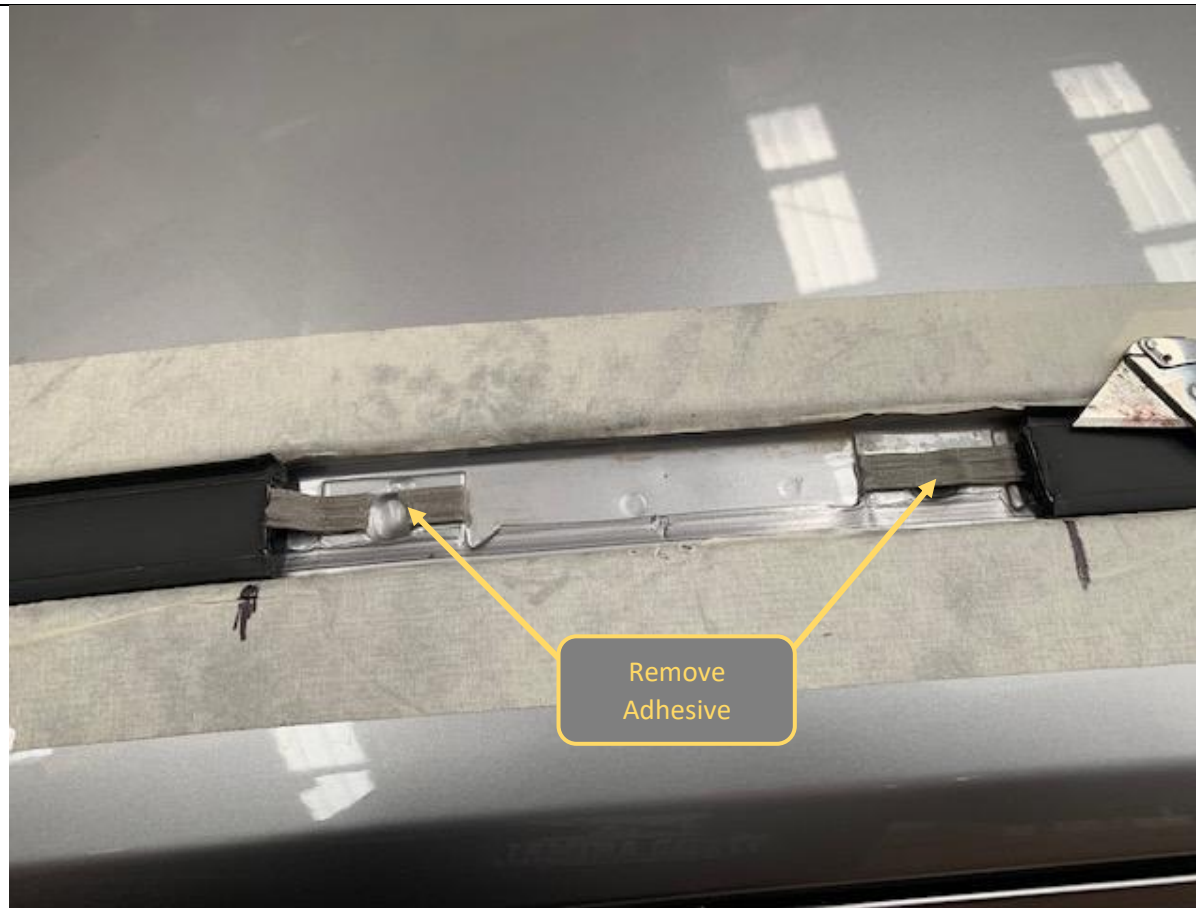


1. Place masking tape on the roof adjacent to the rubber roof trim.
2. Using a trim tool or large flat blade screwdriver, carefully pry end of ditch rubber up from rearward end of roof.
3. Gradually pull/pry off the entire ditch rubber

TOOLS REQUIRED

Trim Tool

FASTENERS

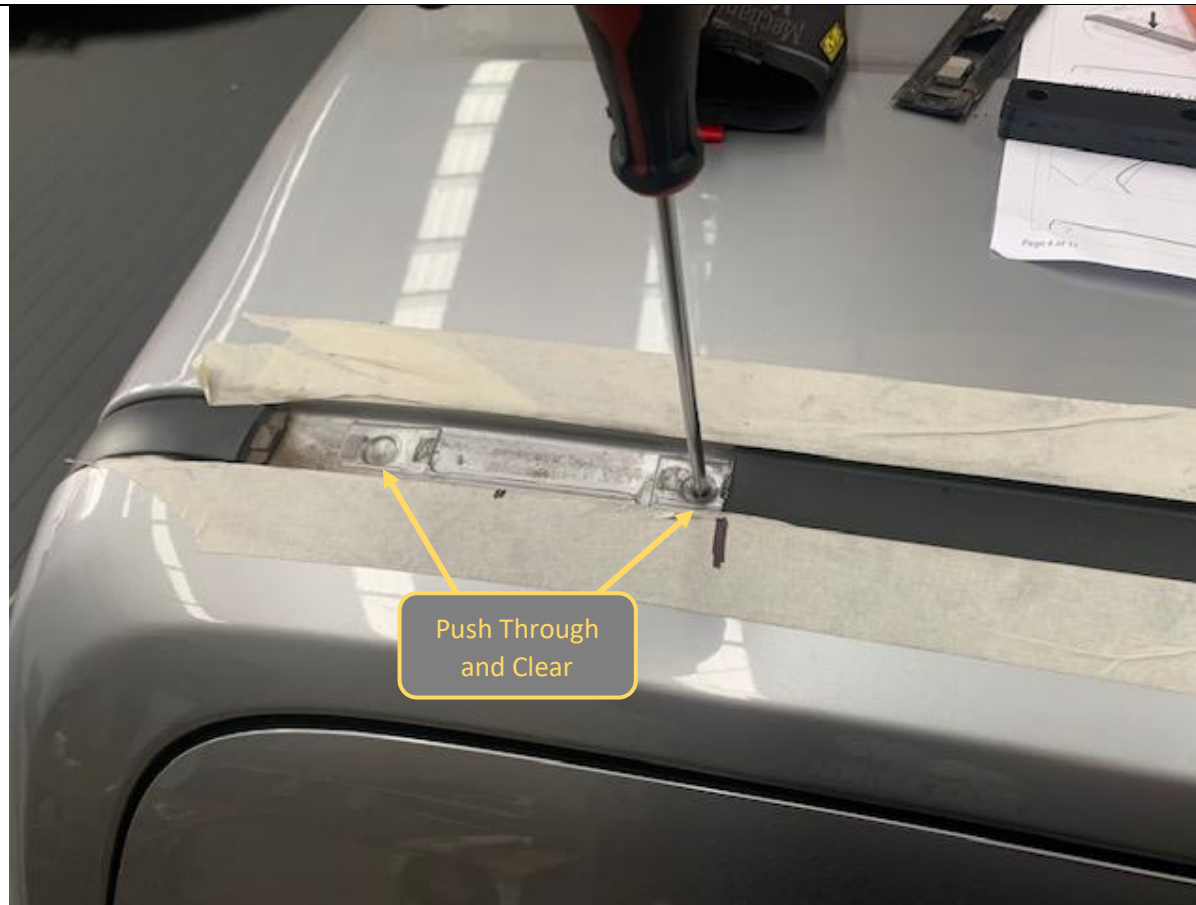


4. Carefully Remove the remaining adhesive tape, using a utility knife.
5. Complete for all entire length of roof ditch.

TOOLS REQUIRED

Utility Knife

FASTENERS



6. Using a small screwdriver or pick, push through the factory sealant patches covering the threaded mounting points in the roof.

These areas are visible as the small circular depressions in the raised square patches.

7. Clear out as much of the sealant patch as possible using a utility knife. Thread an M8 bolt down each of the exposed threaded inserts to ensure they run freely and there is no sealant blocking the threads.

TOOLS REQUIRED

Screwdriver
or
Pick

FASTENERS

M8 bolt

MODELS WITH ROOF RAILS.
IF ROOF RAILS NOT FITTED SKIP TO STEP16



8. Using a plastic trim tool to prevent marking of roof, unclip the plastic cover at the front end of the roof rail, uncovering the forward roof rail bolts.

TOOLS REQUIRED

Plastic Trim Tool

FASTENERS



9. Using a Rag covered flat screwdriver to prevent marking of roof rail, unclip the plastic access covers at for the two center roof rail mounts, uncovering the forward center rail bolts.

TOOLS REQUIRED

Flat Screwdriver

Rag
or
Small plastic trim tool

FASTENERS



10. Using a plastic trim tool to prevent marking of roof, unclip the plastic cover at the rear end of the roof rail, uncovering the back roof rail bolts

TOOLS REQUIRED

Plastic Trim Tool

FASTENERS



11. Remove the front and rear track bolts, using 12mm socket or spanner.

TOOLS REQUIRED

12mm Socket or Spanner

FASTENERS

OE Bolts, Discard.



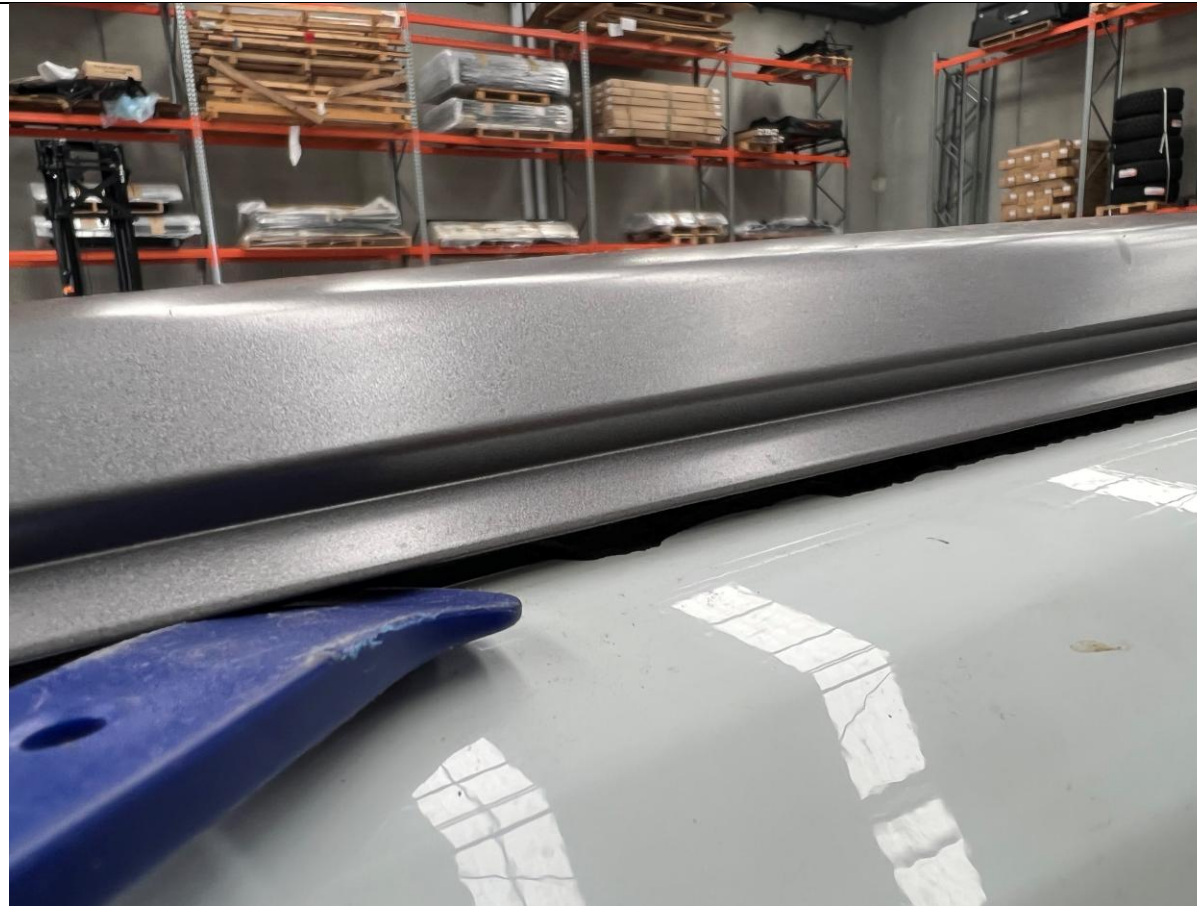
12. Remove the Center track bolts, using 5mm Hex key or hex key socket or

TOOLS REQUIRED

5mm Hex Key

FASTENERS

OE Bolts, Discard.



13. Working from one end, carefully pry the roof rail off the roof surface, gradually releasing the adhesive strip as you go.

TOOLS REQUIRED

Plastic Trim tool

FASTENERS



14. Once adhesive is released, lift off factory roof rail.
15. Complete roof rail removal steps for other side of the vehicle

TOOLS REQUIRED

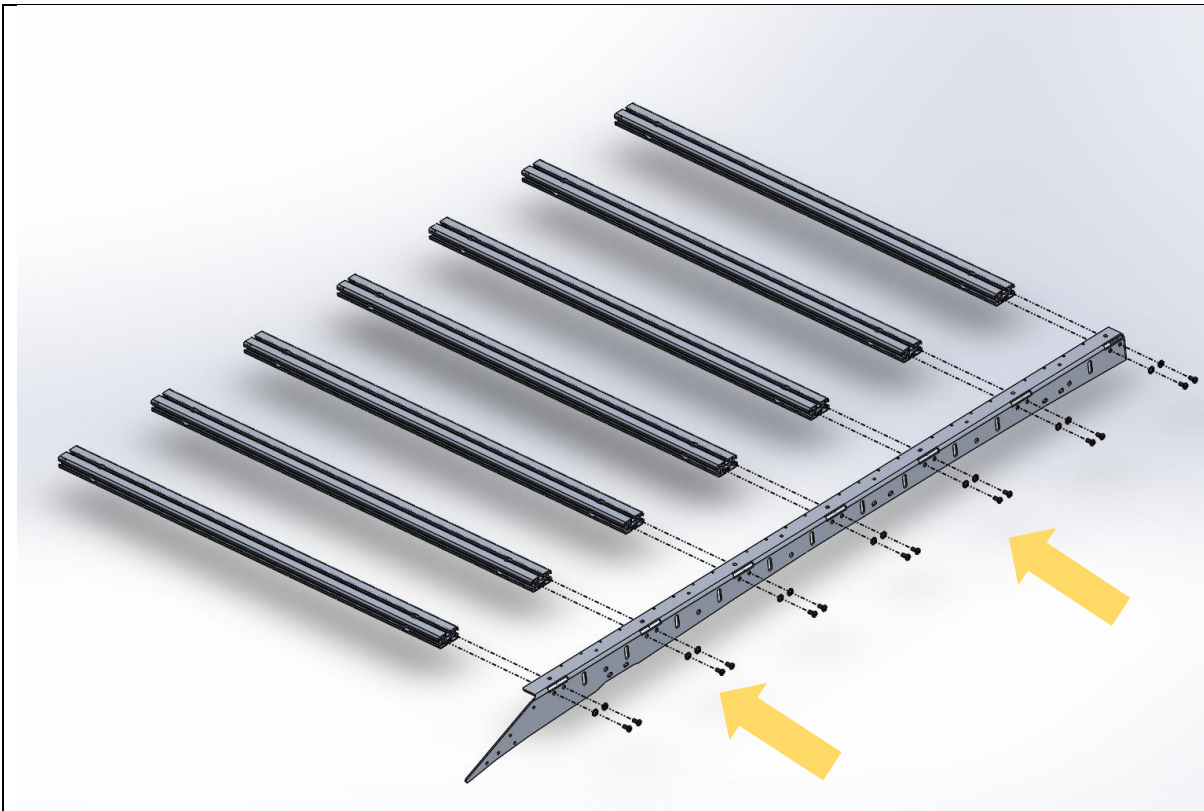
FASTENERS



16. Next Assemble the roof rack. Start by setting out the 7 extrusions on a table. Position them so they sit approximately 250mm apart.

TOOLS REQUIRED

FASTENERS



17. Fit the side rail to the extrusion,

This is easiest to do when the ends of the extrusions are hanging over the edge of a table / workbench.

18. Secure using M8x16 Button Head bolts through the side face into the Tapped holes on the side face of the extrusion.

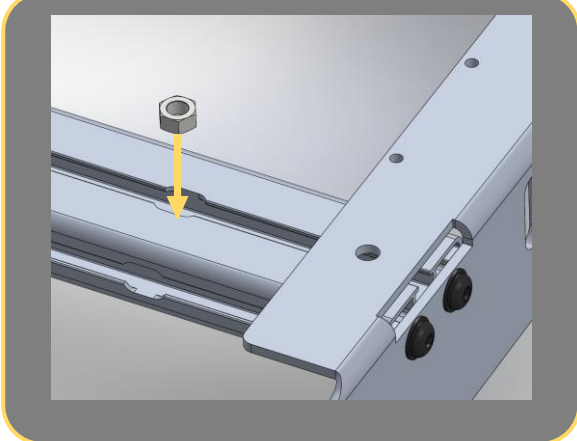
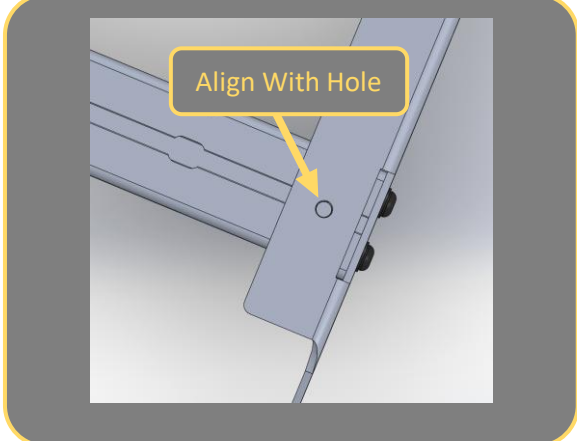
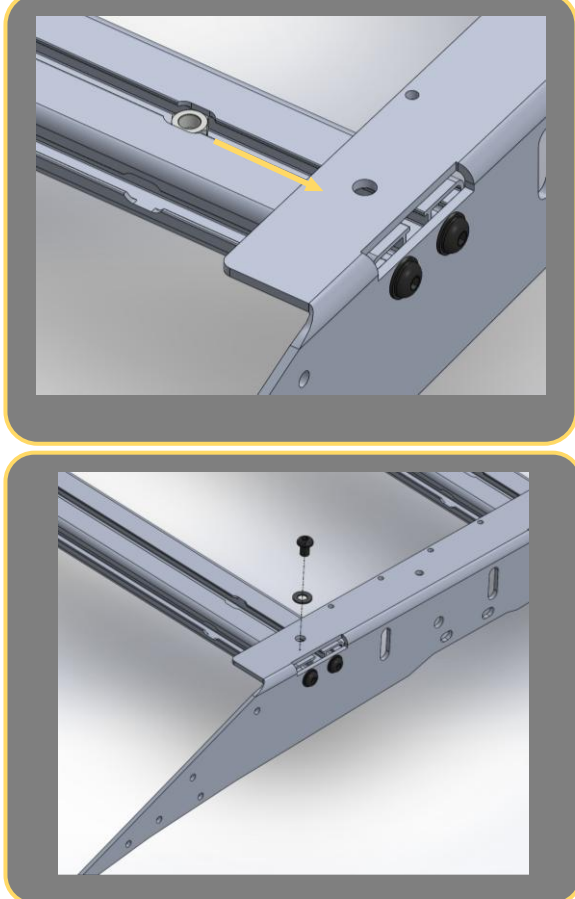
19. Complete steps 17 through 18 for the other side of the rack assembly to fit the other side rail.

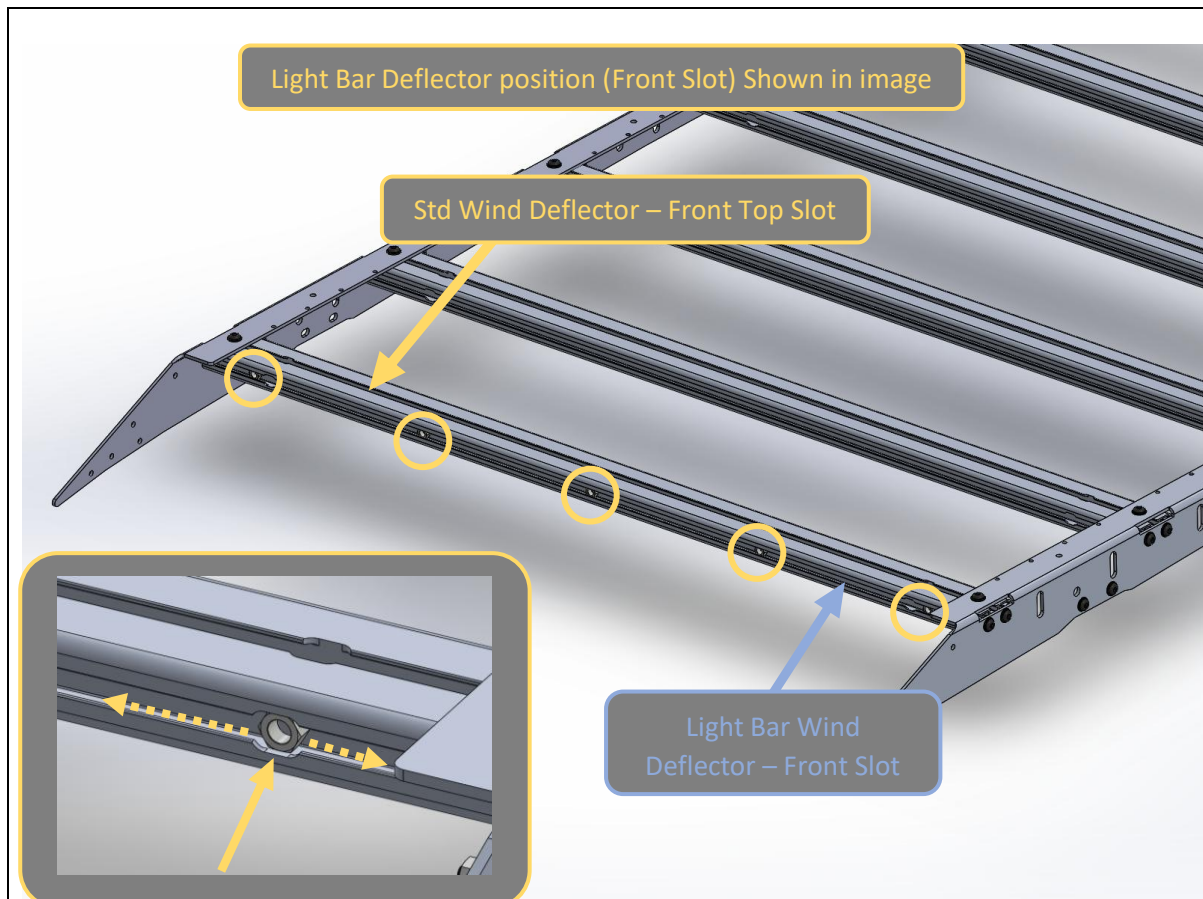
TOOLS REQUIRED

5mm Hex Key

FASTENERS

14x M8x20Button head bolt.
14x M8 Flat Washer

  <p>Align With Hole</p>	
<p>20. Insert M8 Nut into each track for securing top face of side rail.</p> <p>21. Drop nut into slot in extrusion, then slide nut sideways in slot and align with hole in the side rail.</p> <p>22. Secure with M8x16 Bolt + Flat Washer.</p> <p>23. Complete steps 20 through 23 for the other side of the rack assembly to fit the other side rail.</p>	<p>TOOLS REQUIRED</p> <p>5mm Allen Key</p> <p>FASTENERS</p> <p>5x M8 Nuts 5x M8x16 Button head bolt 5x M8 Black Washer</p> <p>Per Side</p>



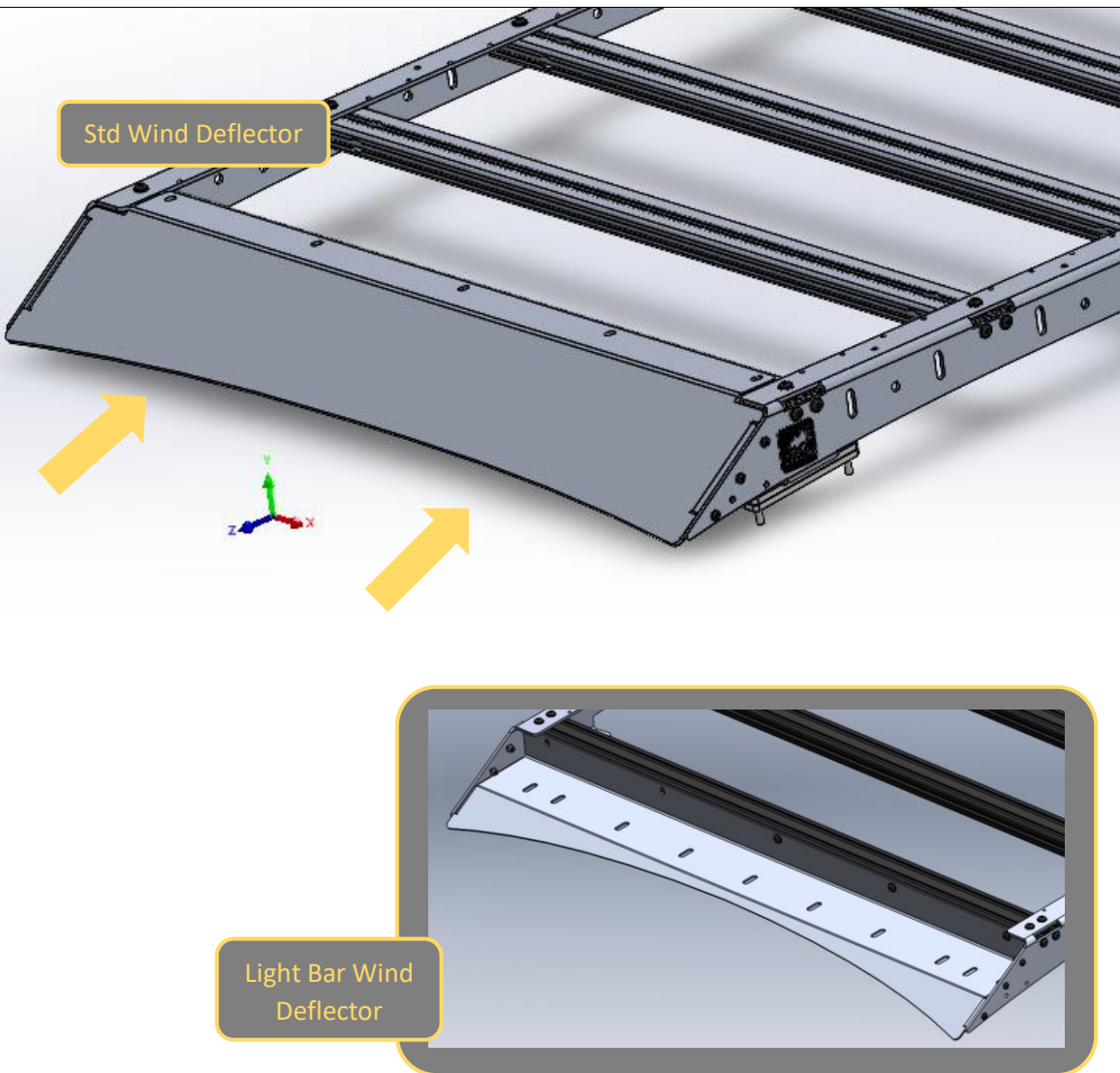
24. If fitting the standard wind deflector fit the 5x M8 nuts to the top front slot of the front most extrusion member.
25. Move nuts side to side using screwdriver to move nuts into correct positions. Gravity should hold the nut in position.
26. If fitting the optional light bar wind deflector, fit the nuts to the front slot of the front first extrusion member.

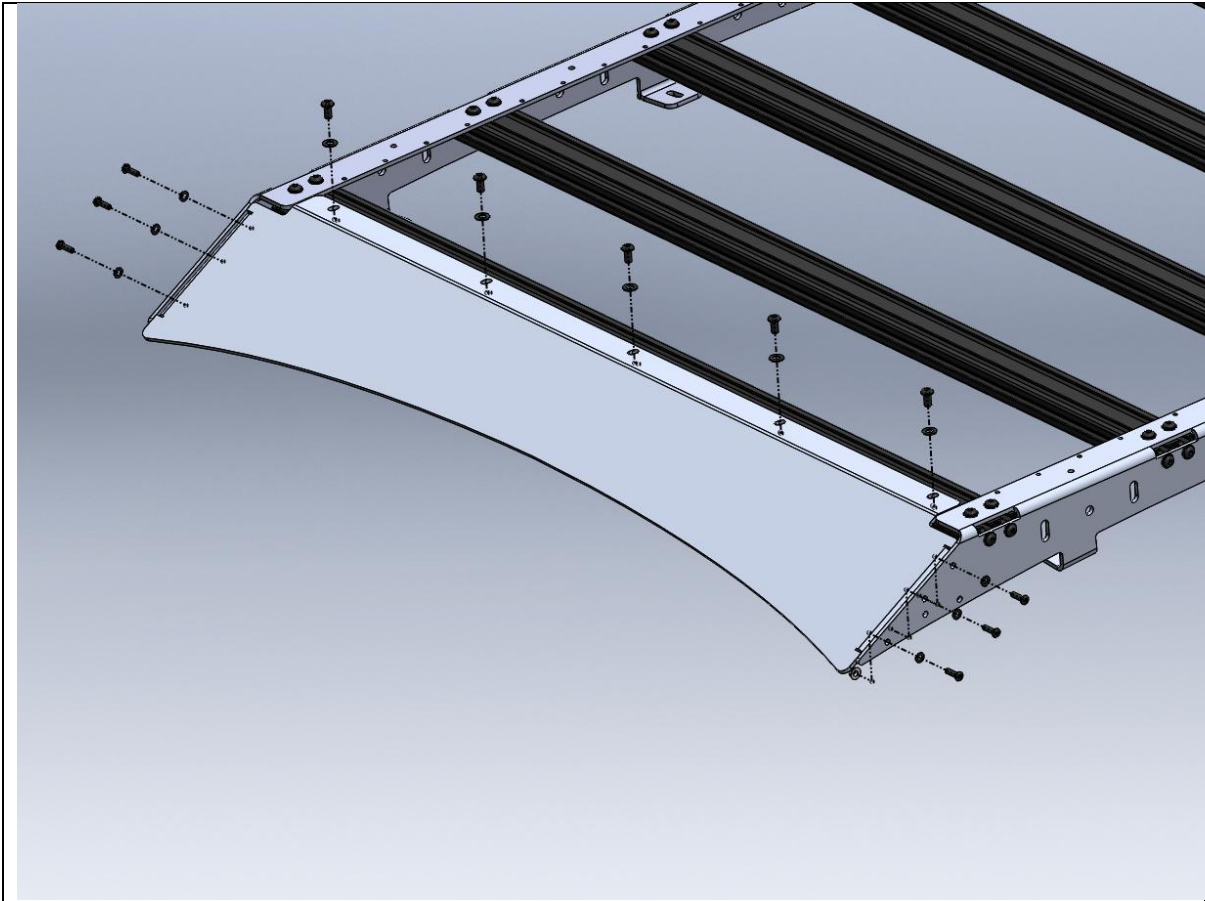
TOOLS REQUIRED

Screwdriver

FASTENERS

5x M8 Nuts

	
<p>27. Fit the wind deflector to the rack assembly. The deflector should sit inside the side rails and on top of (Standard type) or in front (Light bar type) the first extrusion member.</p>	<p>TOOLS REQUIRED</p>
	<p>FASTENERS</p>



28. Secure the wind deflector to the side rails with M6x16 button head bolts, Flat washers, and flange nuts.
29. Secure the wind deflector to the extrusion with M8x16 button head bolts and Flat washers into the nuts in the front extrusion.
30. Once fitted, ensure all bolts are tightened.

TOOLS REQUIRED

4mm Hex Key
5mm Hex Key

FASTENERS

6x M6x16 Button head bolt.
6x M6 Flat Washer
6x M6 Flange Nut
5x M8x16 Button head bolt
5x M8 Flat Washer



31. Pre fit the M8 Cage nut to the front and rear mounting brackets. A small flat screwdriver can be used to assist in pushing the cage nut into position.

32. Do Not Pre fit the cage nut to the single bolt center mounts at this stage.

TOOLS REQUIRED

Flat screwdriver

FASTENERS

M8 Cage Nut



33. Clean the area around all of the mounting points with isopropyl alcohol or wax and grease remover solvent to ensure a good sealant bond.

TOOLS REQUIRED

Rag
Isopropyl alcohol

FASTENERS

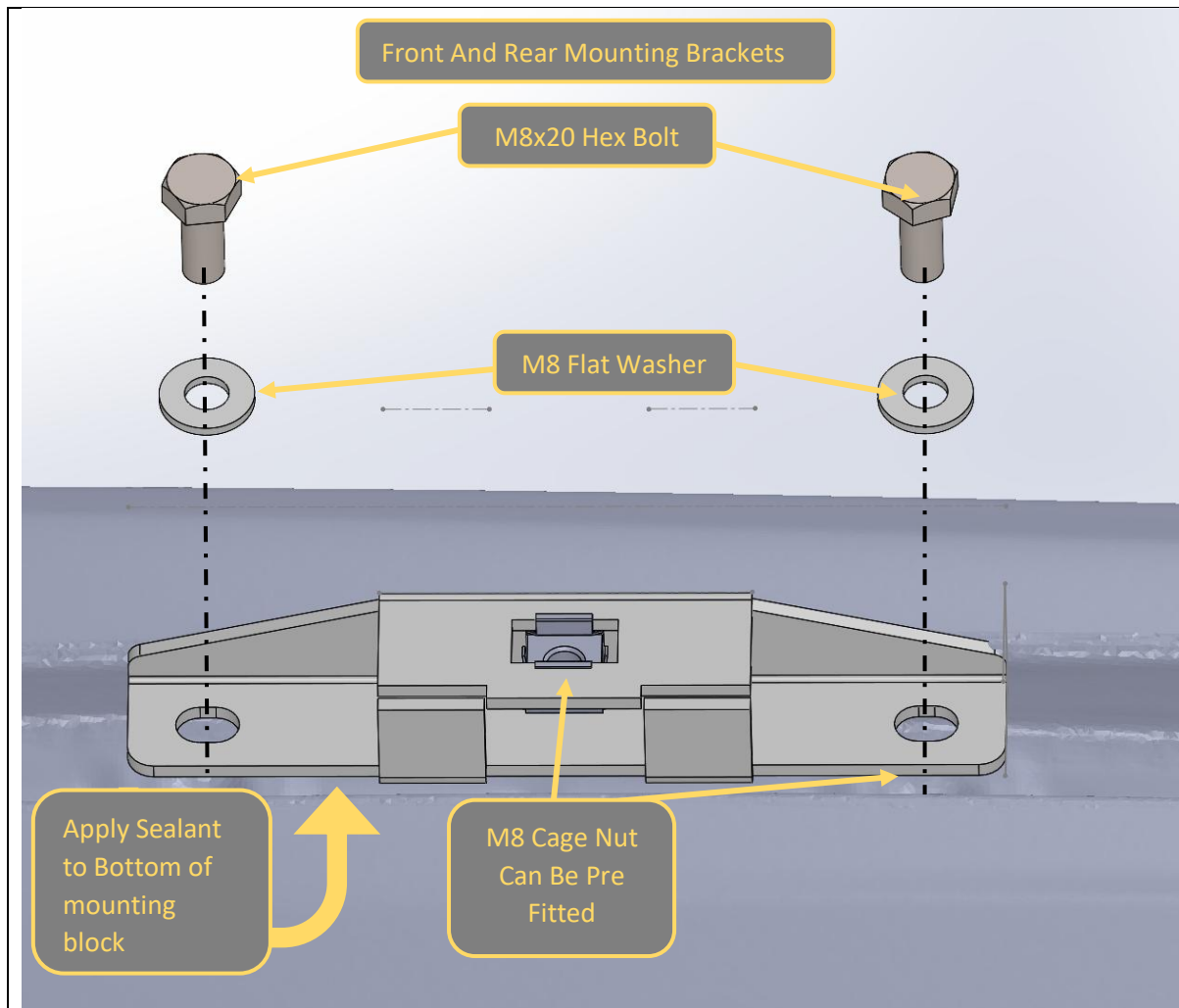


34. Working one mount at a time fit the mounts according to the following steps.
35. First apply a generous amount of sealant around the bolt hole locations on the roof.

TOOLS REQUIRED

Automotive sealant

FASTENERS



36. Fit the mounting brackets to the fixed roof mounts on the vehicle. The mounts have different hole spacing front (135mm) and rear (120mm).
37. Apply Automotive Grade sealant to the bottom face of the mounting block (side with hexagonal cutout)
38. Place bracket over mounting points and secure with M8x20 Hex bolts and M8 Flat washers. Tighten gradually, partially tightening each bolt and alternating until both bolts are tight.

TOOLS REQUIRED

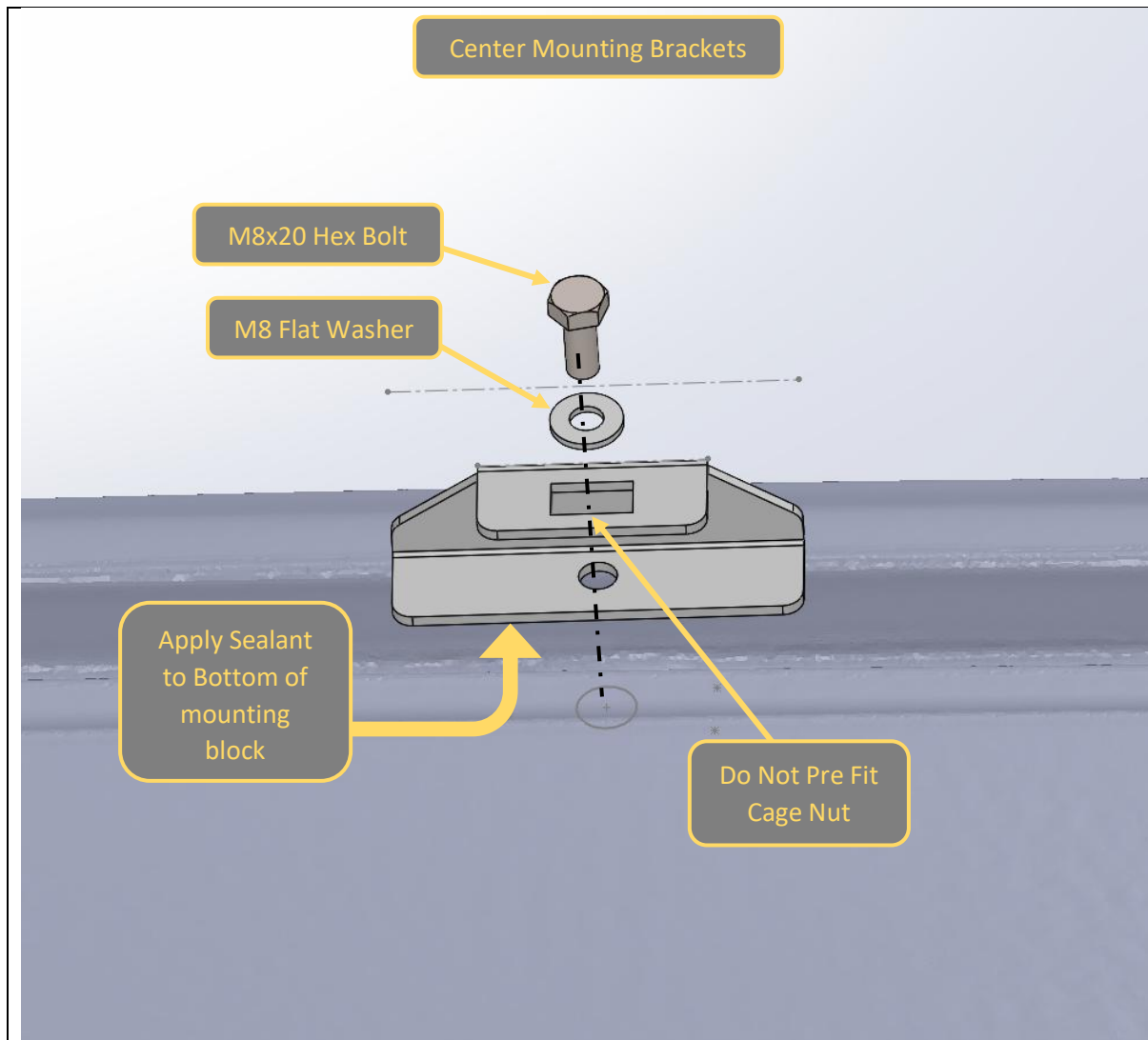
13 mm Spanner / Socket
1/4in drive socket suggested

Automotive sealant

FASTENERS

2x M8x20 Hex Bolt
2xM8 Flat Washer HD

Each Mount



39. Fit the center mounting brackets to the fixed roof mounts on the vehicle.
40. Apply Automotive Grade sealant to the bottom face of the mounting block (side with hexagonal cutout)
41. Place bracket over mounting point and secure with M8x20 Hex bolts and M8 Flat washers. Tighten fully whilst holding mount straight.

Low profile 1/4" Drive sockets make this process much easier.
42. Once secured fit the M8 Cage nut to the mount.

TOOLS REQUIRED

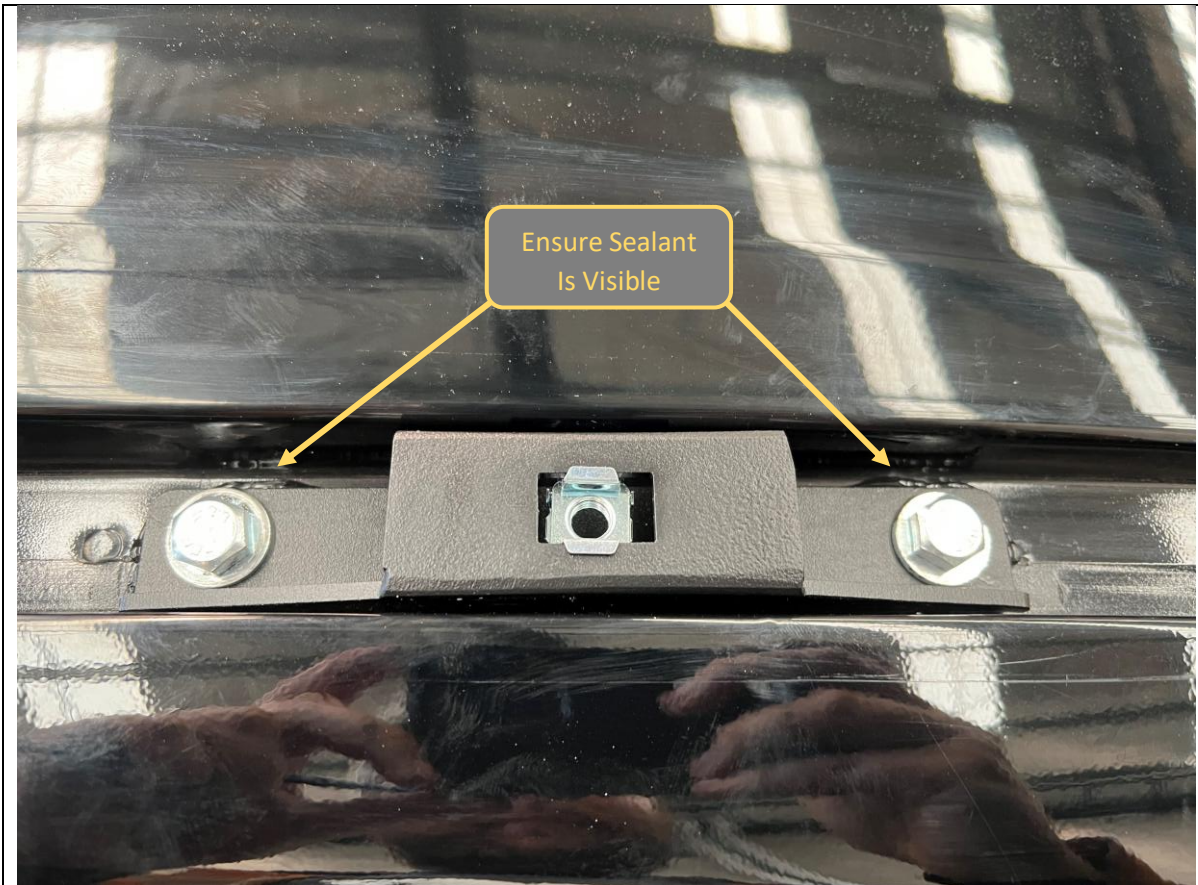
13 mm Spanner / Socket
1/4in drive socket suggested

Automotive sealant

FASTENERS

1x M8x20 Hex Bolt
1xM8 Flat Washer HD
1x M8 Cage Nut

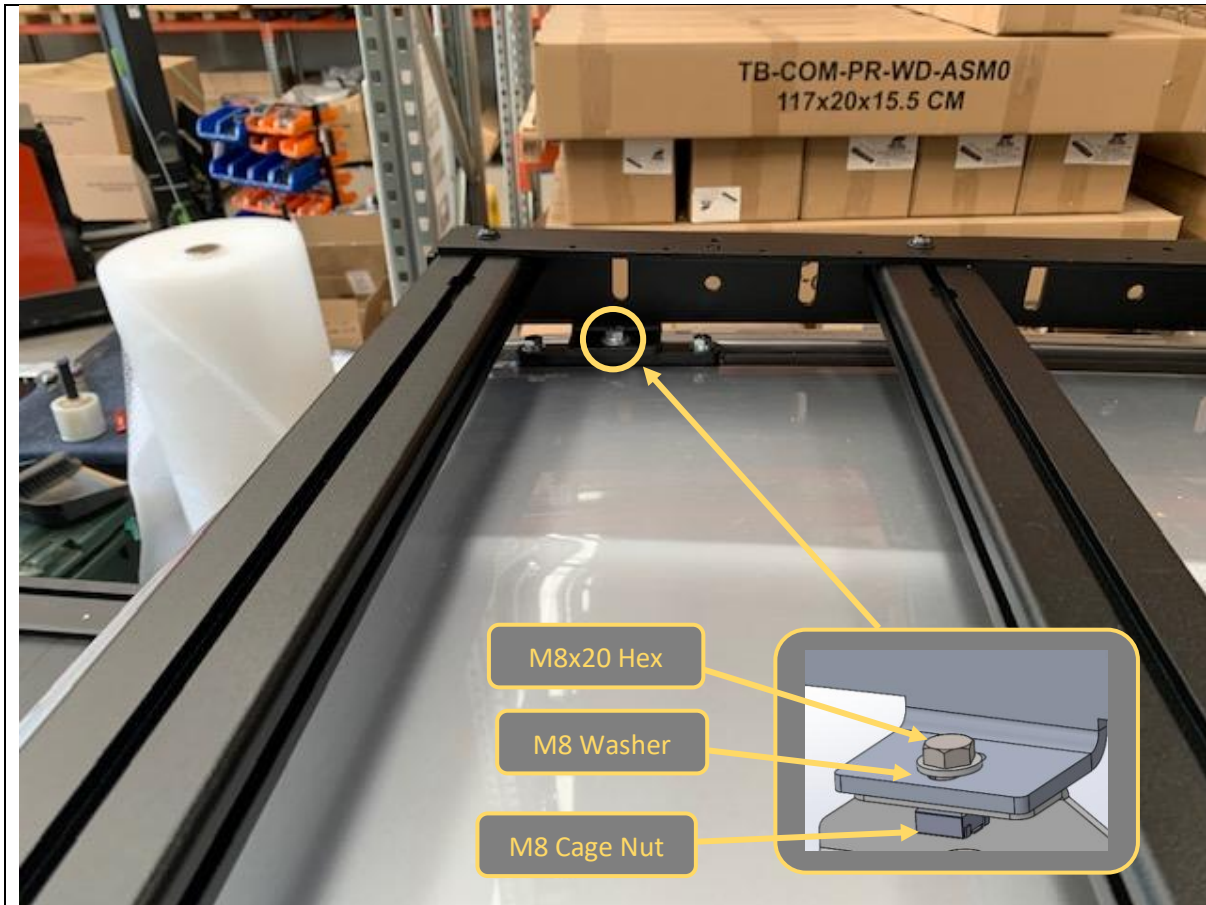
Each Mount



43. After mounts are tightened check sealant. Squeeze out should be visible around all mounts.
44. If insufficient sealant visible, remove mount and apply more sealant to ensure water tight seal is made.

TOOLS REQUIRED

FASTENERS



45. With assistance from another person, lift the rack onto the vehicle.
46. Position rack such that the rack feet sit upon the mounting blocks and align with the M8 Cage Nuts
47. Secure rack to track using M8x20 Hex head bolts and M8 Flat washers.
48. Tighten gradually, partially tightening each bolt moving around in a circular pattern until all bolts are tight.

TOOLS REQUIRED

13mm Spanner

FASTENERS

8x M8x20 Hex Bolt
8x M8 HD Flat Washer



49. Double Check all Fasteners are tight.
50. Fit the Offroad Animal logo plates to the side of the rack near the wind deflector, one each side.
51. With That you are done! Head Bush and Enjoy your new rack!

For contact details see www.offroadanimal.com